

Model 9095AA 2" Overfill Prevention Valve

SPECIFICATION SHEET

Application

The 9095AA 2" series overfill prevention valve is designed to prevent overfilling storage tanks by providing a positive shut-off during a pressurized fill.

Features

- Installs directly onto a 4" riser or top mounted spill container
- Minimum shut-off height is 2" from the tank top
- 2.35" of float height adjustment
- Drop tube adaptor accepts 2" drop fill tubes (Morrison 419)
- Full flow to shut-off point, cushioned closure eliminates shock
- Integral pressure relief
- Integral anti-siphon function
- Optional test mechanism

Materials of Construction

- Direct fill adaptor...passivated aluminum
- Remote adaptor...ductile iron, powder coated
- Shaft, linkage and hardware...stainless steel
- Lower pipe nipple...e-coated steel
- Drop tube adaptor...passivated aluminum
- Body...passivated aluminum

Operational Criteria

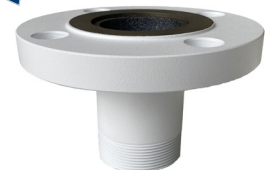
- Minimum 5 PSI flow requirements
- Maximum operating pressure is 100 PSI
- Maximum viscosity of 3000 centistokes (See examples on next page)
- A tight fill connection is required for the valve to operate
- The estimated flow rate is 230 GPM at 10 PSI pressure drop (See flow curve)

Code Compliance

ULC-S661-10 listed, NFPA 30, 30A, UFC, IFC, PEI /RP200, PEI/RP 600, Florida DEP EQ-851, and California EVR models available



9095AA0200
(2")

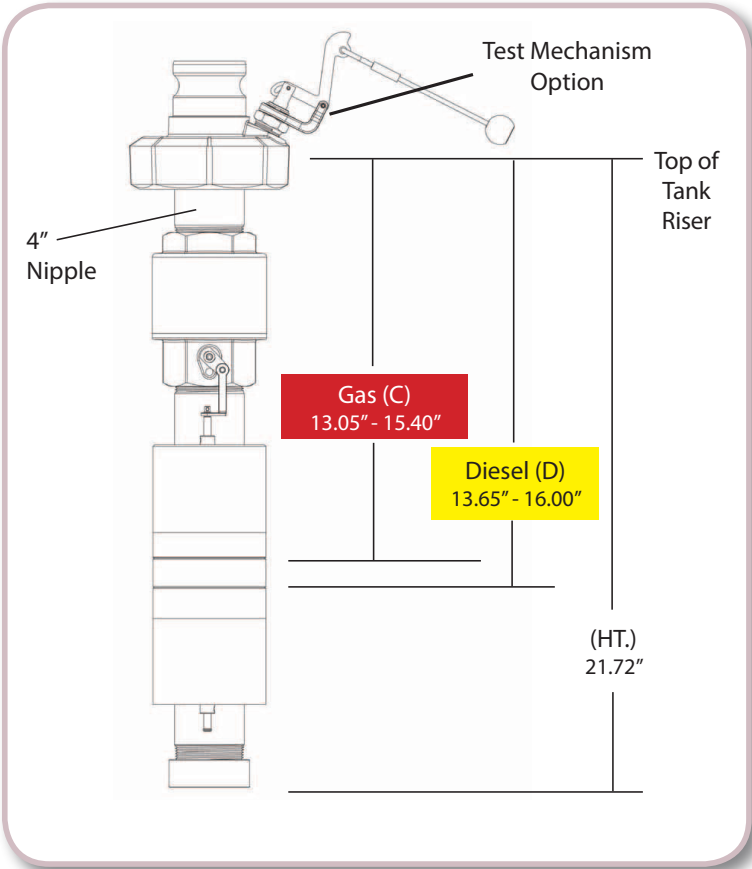


9095AF
(2")

NOTE
For use on clean liquids only.

Item Number	Size	Description	Tank Opening	Weight (lbs)
9095AA0200 AV	2"	Valve with 2" male quick disconnect x 4" female threads	4"	14.10
9095AA4000 AV	2"	Valve with 3" male quick disconnect x 4" female threads	4"	16.80
9095AA3200AVEVR	2"	Valve with 2" female threads x 4" female threads	4"	14.10
9095AA4200AVEVR*	2"	Valve with 3" female threads x 4" female threads	4"	21.25
9095AA5200AVEVR	2"	Valve with 2" dry disconnect x 4" female threads	4"	21.25
9095AA9200AVEVR	2"	Valve less adaptor	4"	14.10
9095ATM0100 AM	2" & 3"	Mechanical test mechanism kit for 9095AA Series (except 9095AA4000 AV)		.50
9095ATM1000 AK	2" & 3"	Mechanical test mechanism kit for 9095X Series and 9095AA4000AVEVR		
9095A-KIT91 AV	2"	Includes 9095AA0200 AV, 2" x 6' 419 drop tube, and 305C cap		
9095ATKIT91 AV	2"	Same as 9095A-KIT91 AV, with test mechanism		
NEW! 9095AF3201 AA	2"	Adaptor 2" male thread to 2" raised face flange (for use with 9095AA3200AVEVR)		5.92

*No mechanical test mechanism available for 9095AA4200 AVEVR.



EXAMPLES OF OIL & MINIMUM TEMPERATURE FOR USE WITH 9095AA

Oil Type	Temp (°F)	CentiStokes (cSt)
15W-40	28	2720
10W-40	25	2800
10W-60	28	2850
5W-40	25	2750
0W-30	15	2900
SAE 30	28	2950

