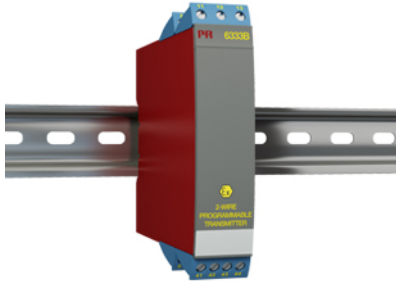


2-wire programmable transmitter



6333B

- RTD or Ohm input
- High measurement accuracy
- 3-wire connection
- Can be installed in Ex zone 0
- 1- or 2-channel version



Application

- Linearized temperature measurement with Pt100...Pt1000 or Ni100...Ni1000 sensor.
- Conversion of linear resistance variation to a standard analog current signal, for instance from valves or Ohmic level sensors.

Technical characteristics

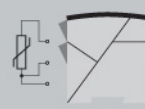
- Within a few seconds the user can program PR6333B to measure temperatures within all RTD ranges defined by the norms.
- The RTD and resistance inputs have cable compensation for 3-wire connection.
- A limit can be programmed on the output signal.

Mounting / installation

- Mounted vertically or horizontally on a DIN rail. Using the 2-channel version, up to 84 channels can be mounted per meter.

Connections

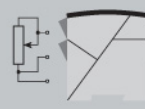
RTD to 4...20 mA



2-wire installation in control room



Resistance to 4...20 mA



2-wire installation in control room



Order:

Type	Galvanic Isolation	Channels
6333B	None : 1	Single : A Double : B

Environmental Conditions

Specifications range.....	-40°C to +85°C
Storage temperature.....	-40°C to +85°C
Calibration temperature.....	20...28°C
Relative humidity.....	< 95% RH (non-cond.)
Protection degree.....	IP20

Mechanical specifications

Dimensions (HxWxD).....	109 x 23.5 x 104 mm
Weight (1 / 2 channels).....	145 / 185 g
DIN rail type.....	DIN EN 60715/35 mm
Wire size.....	0.13...2.08 mm ² AWG 26...14 stranded wire
Screw terminal torque.....	0.5 Nm

Common specifications**Supply**

Supply voltage.....	8.0...30 VDC
---------------------	--------------

Response time

Response time (programmable).....	0.33...60 s
Internal consumption.....	0.19...0.8 W
Voltage drop.....	8.0 VDC
Warm-up time.....	5 min.
Programming.....	Loop Link
Signal / noise ratio.....	Min. 60 dB
Accuracy.....	Better than 0.1% of selected range
Signal dynamics, input.....	19 bit
Signal dynamics, output.....	16 bit
Effect of supply voltage change.....	< 0.005% of span / VDC

Input specifications**Common input specifications**

Max. offset.....	50% of selected max. value
------------------	----------------------------

RTD input

RTD type.....	Pt100, Ni100, lin. R
Cable resistance per wire (max.).....	10 Ω
Sensor current.....	> 0.2 mA, < 0.4 mA
Effect of sensor cable resistance (3-wire).....	< 0.002 Ω / Ω
Sensor error detection.....	Yes

Linear resistance input

Linear resistance min....max.....	0 Ω...10000 Ω
-----------------------------------	---------------

Output specifications**Current output**

Signal range.....	4...20 mA
Min. signal range.....	16 mA
Load (@ current output).....	≤ (Vsupply - 8) / 0.023 [Ω]
Load stability.....	≤0.01% of span / 100 Ω
Sensor error indication.....	Programmable 3.5...23 mA
NAMUR NE 43 Upscale/Downscale.....	23 mA / 3.5 mA

Common output specifications

Updating time.....	135 ms
*of span.....	= of the presently selected range

Observed authority requirements

EMC.....	2014/30/EU
----------	------------

Approvals

ATEX 2014/34/EU.....	KEMA 09ATEX0147 X
IECEX.....	DEK 14.0049 X
CSA.....	1125003
FM.....	2D5A7
EAC Ex TR-CU 012/2011.....	RU C-DK.GB08.V.00410