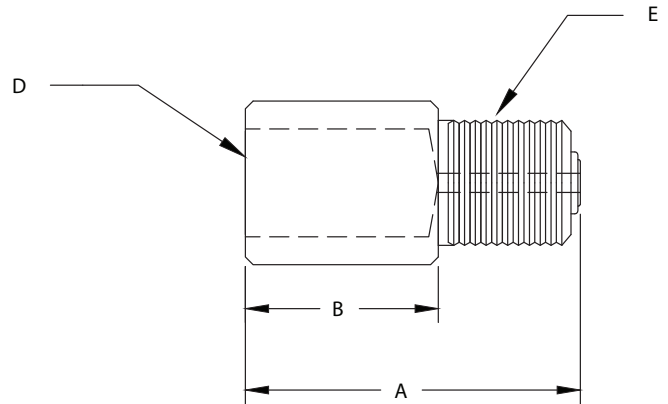
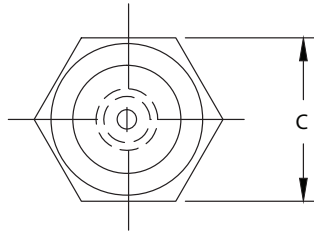


SNUBBER MODEL SN

Illustrated model: SN



Specifications

Housing:	Brass or 304 stainless steel
Connection:	¼ in nptm x ¼ in nptf or ½ in nptm x ½ in nptf
Snubber element:	Sintered porous type 304 stainless steel
Operating pressure:	Brass: 10,000 psi (68,950 kPa) 304 stainless steel: 20,000 psi (137,900 kPa)
Explosion (pressure):	Brass: 30,000 psi (206 850 kPa) 304 stainless steel: 45 000 psi (413 700 kPa)
Operating temperature:	Brass: -58 to 536°F (-50 to 280°C) 304 stainless steel: -319 to 1,472°F (-195 to 800°C)

Dimensions as per diagram (continued)

Model	A	B	C	D	E
SN25	1.65 in (25.4 mm)	1 in (25.4 mm)	0.75 in (19 mm)	¼ in nptf	¼ in nptm
SN50	2.17 in (55.1 mm)	1.25 in (31.75 mm)	1.06 in (26.9 mm)	½ in nptf	½ in nptm
SNAJ25	2.04 in (51.8 mm)	1.47 in (37.33 mm)	0.75 in (19 mm)	¼ in nptf	¼ in nptm
SNAJ50	2.39 in (60.7 mm)	1.65 in (41.9 mm)	1.25 in (31.75 mm)	½ in nptf	½ in nptm

To order, use the code in the corresponding column

Description	Product code
1/4 in nptm x 1/4 in nptf brass (air)	SN25B-A
1/4 in nptm x 1/4 in nptf brass (oil)	SN25B-O
1/4 in nptm x 1/4 in nptf brass (water)	SN25B-W
1/4 in nptm x 1/4 in nptf SS304 (air)	SN25304-A
1/4 in nptm x 1/4 in nptf SS304 (oil)	SN25304-O
1/4 in nptm x 1/4 in nptf SS304 (water)	SN25304-W
1/2 in nptm x 1/2 in nptf brass (air)	SN50B-A
1/2 in nptm x 1/2 in nptf brass (oil)	SN50B-O
1/2 in nptm x 1/2 in nptf brass (water)	SN50B-W
1/4 in nptm x 1/4 in nptf brass adjustable	SNAJ25-B
1/4 in nptm x 1/4 in nptf SS316 adjustable	SNAJ25-316
1/2 in nptm x 1/2 in nptf brass adjustable	SNAJ50-B
1/2 in nptm x 1/2 in nptf SS316 adjustable	SNAJ50-316