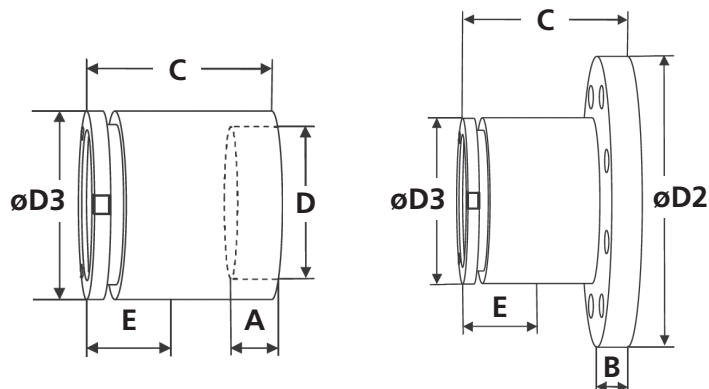


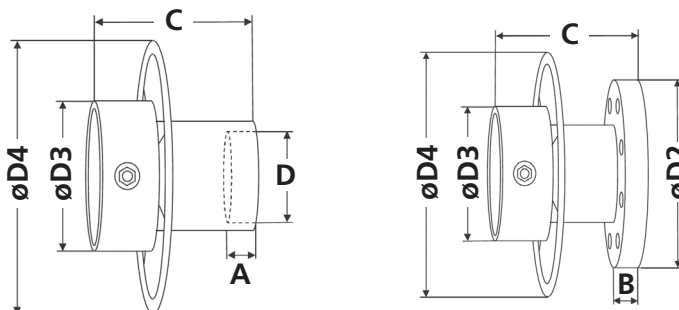
# Twist-Lok™

## Dry Disconnect Coupler



### Technical Data - Adaptor (Male)

Type	Connection	Pressure Rating (lbs)	D	Ø D2 (In)	A (In)	B (In)	C (In)	E* (In)	Ø D3 (In)	Weight (lbs)
Twist-Lok NPS 1" Male	Female Thread	360	NPT 1"	–	0.68	–	3.54	0.94	2.18	1.8
	1" Flange	300	–	4.88	–	0.69	3.14	0.94	2.18	3.9
Twist-Lok NPS 2" Male	Female Thread	360	NPT 1-1/2"	–	0.70	–	4.17	1.33	2.73	3.9
	Female Thread	360	NPT 2"	–	0.75	–	3.77	1.33	2.73	3.9
	2" Flange	300	–	6.5	–	0.88	3.74	1.33	2.73	10.1
Twist-Lok NPS 3" Male	Female Thread	360	NPT 3"	–	1.20	–	5.83	1.63	4.69	8.6
	3" Flange	300	–	8.25	–	1.12	5.04	1.63	4.69	21.1
Twist-Lok NPS 4" Male	Female Thread	225	NPT 4"	–	1.30	–	5.90	1.41	5.31	14.3
	4" Flange	150	–	9.0	–	0.94	4.92	1.41	5.31	23.1



### Technical Data - Coupler (Female)

Type	Connection	Pressure Rating (lbs)	D	Ø D2 (In)	A (In)	B (In)	C (In)	Ø D3 (In)	Ø D4 (In)	Weight (lbs)
Twist-Lok NPS 1" Female	Female Thread	360	NPT 1"	–	0.68	–	4.92	2.16	3.74	4.5
	1" Flange	300	–	4.88	–	0.69	4.52	2.16	3.74	6.5
Twist-Lok NPS 2" Female	Female Thread	360	NPT 1-1/2"	–	0.70	–	5.40	3.30	9.44	7.7
	Female Thread	360	NPT 2"	–	0.75	–	5.35	3.30	9.44	7.7
	2" Flange	300	–	6.5	–	0.88	5.12	3.30	9.44	13.8
Twist-Lok NPS 3" Female	Female Thread	360	NPT 3"	–	1.20	–	8.74	5.70	11.02	22.0
	3" Flange	300	–	8.25	–	1.12	7.87	5.70	11.02	34.1
Twist-Lok NPS 4" Female	Female Thread	225	NPT 4"	–	1.30	–	9.05	5.90	14.56	25.3
	4" Flange	150	–	9.0	–	0.94	8.07	5.90	14.56	36.4