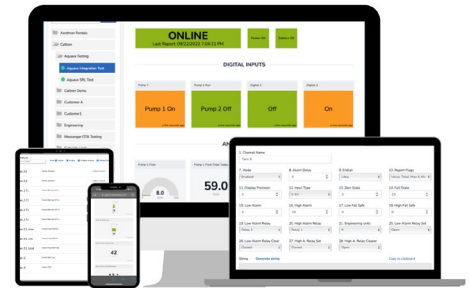


REMOTEIQ™



REMOTEIQ WATER REMOTE MONITORING CONTROL

HIGHLIGHTS

- Monitor and control assets such as pump stations, water and wastewater plants, lift stations, diesel engines, generators and flow meters
- Manage remote assets on mobile devices, tablets and laptops from any location
- Minimizes site visits and automate regulatory compliance workflows
- Utilize over-the-air capabilities for system upgrades and problem-solving
- Optimize operational and field-level decisions using real-time data

FEATURES

- Receive critical event notifications via text, voice and email
- On-demand ability to control remote devices
- 24/7 access provides accurate and more reliable data with less room for human error
- View current and historical data
- User-friendly interface for configuring site data points, alarms and reports
- Data transmission, access and storage are locked down from end-to-end
- IT infrastructure, licensing or third-party integration are not required
- Accessible from any network-connected device
- Subscriptions are bundled with wireless airtime.
- Customization and private labeling are available
- Cellular data transmission is included.
- Customer training and support spanning software and hardware option
- Open platform that supports equipment from most manufacturers





CLOUD-BASED MONITORING AND CONTROL OF REMOTE ASSETS.

DATA PLAN FEATURES AND COMPARISON	ECONOMY	STANDARD
	Standard Remote Monitoring & Control	Advanced Remote Monitoring, Control & Real-time Dashboards
Alarm notifications and acknowledgments via text, voice and email	●	●
User-configurable rosters for alarm recipients	●	●
Remote website access for viewing system status from any smartphone, tablet or PC	●	●
Historical alarm report with complete audit trail	●	●
Configuration changes remotely with time and date stamped audit trail	●	●
User-defined credentials for individuals with access	●	●
Control field devices remotely (requires secure user access)	●	●
Tabular presentation of monitored conditions	●	●
Map overview provides the status of all sites	●	●
Ability to print and export data	●	●
On-demand and scheduled reports (pump run-times/cycles, flow, level)	●	●
Graphing and trending of all monitored data points	●	●
Flowmeter support for digital (pulse) and analog inputs	●	●
Rainfall gauge support	●	●
Incident-based image capture (RemotIQ Vision)	●	●
Advanced graphics of monitored conditions (pumps, tanks, generator, level, flow, discharge pressure, floats)		●
Real-time status of inputs (level, flow, pump run-times/cycles, pump differentials, alarms)		●
Reporting of inflow/outflow, volumes and rates		●
Tank and well support (monitoring and controls)		●
Pump, engine and generator control		●

North America: +1.234.806.0018 | Sales.US@Cattron.com

Europe: +49.2151.4795.0 | Sales.EU@Cattron.com

UK: +44.1932.238121 | Sales.UK@Cattron.com

South America: +55.19.3518.7030 | Sales.BR@Cattron.com

Asia: Sales.CN@Cattron.com

Oceania: Sales.AU@Cattron.com

cattron.com

EN-2022-11-V02

Cattron™ reserves the right to change specifications and product details on this datasheet without prior notice. Cattron and all associated logos or marks are trademarks of Cattron and/or its subsidiaries. All rights reserved.

