



# Scully Two-Wire Optic Socket

## Overfill Prevention For Road Tankers with 1-8 Compartments

*Featuring Dynacheck® – Automatic and Continuous Self-Checking Circuitry*

### DESCRIPTION

The Scully two-wire optic socket is used to connect up to 8 tanker mounted two-wire optic sensors to a Scully Overfill Prevention Monitor, such as an ST15 single point overfill prevention controller. Can be used on single compartment up to 8 compartment vehicles, with dummy sensors being provided in the socket. It can also have an interlock switch installed which allows the brakes to be applied when the Scully plug is connected, and a pressure switch can be fitted to make sure the connection of the vapour hose is completed before a permissive signal is given by the controller. The socket can have any combination of the above installed at the customer's request.

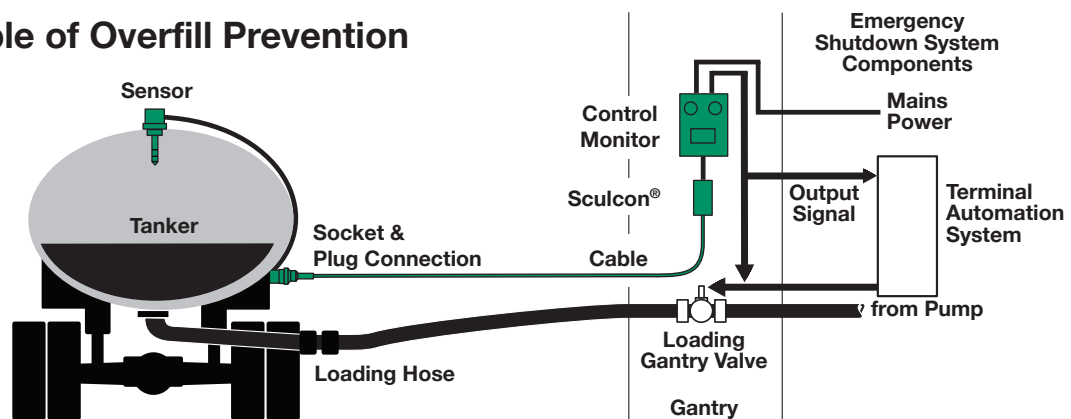


*Scully Two-Wire Optic Socket  
with Polyvinyl Cap*

### FEATURES AND BENEFITS

- Suitable for Scully two-wire optic sensors.
- Caters to top and bottom loading.
- Rugged construction.
- Incorporates electronic dummy for tankers with less than eight compartments.
- Easy installation on tanker chassis.
- Lightweight, green, polyvinyl cap.
- Available with integral brake interlock switch for top loading.
- Optional mounting bracket with threaded captive plate and bolts for top loading socket.
- Optional integral pressure switch for vapor recovery.
- Pins for tanker earthing incorporated.

### Principle of Overfill Prevention

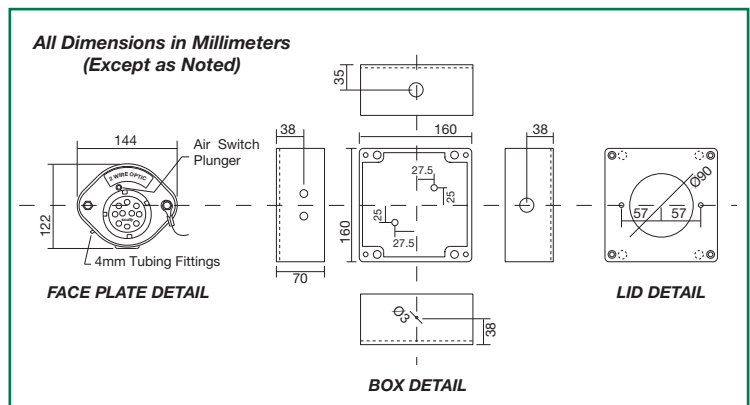


67155 Rev B

# Overfill Prevention For Road Tankers with 1-8 Compartments

## TECHNICAL SPECIFICATIONS

<b>Electrical Connection:</b>	Terminals for pressure crimping
<b>Electronic Dummy:</b>	For use in road tankers with eight or fewer compartments
<b>Clamping:</b>	Provided for within the socket
<b>Size:</b>	Refer to diagram
<b>Exposed Material:</b>	
<b>Top Socket:</b>	Zinc/aluminum alloy body
<b>Bottom Socket:</b>	Polycarbonate
	Stainless steel contact pins
	Polyvinyl dust cap
<b>Weight:</b>	2.3 kg.



The Scully model SJ-80B two-wire optic socket contains only intrinsically safe wiring.

## ORDERING INFORMATION

Order one two-wire optic socket per vehicle. Please specify the number of compartments.

Add One electronic dummy is necessary for tankers with 3-8 compartments, and two electronic dummy's are needed for 1 + 2 compartments.

Description	Part Number
Top Socket with 2 Dummy's Only	08644
Top Socket with Nothing Installed	08646
Top Socket with Dummy and Interlock	08802/I
Bottom Socket with 2 Dummy's Only	08645
Bottom Socket with Dummy and Pressure Switch	08646/P
Bottom Socket with 2 Dummy's and Interlock	08802/I/T/2Comp
Bottom Socket with 1 Dummy, Interlock and Pressure Switch	08802/IP
Bottom Socket with 2 Dummy's, Interlock and Pressure Switch	08802/IP/1Comp
Bottom Socket with Interlock and Pressure Switch	08802/IP/-DUMMY
Bottom Socket with 2 Dummy's and Interlock Only	08802/I/B/1Comp
Bottom Socket with 2 Dummy's, Interlock and Pressure Switch	08802/IP/2Comp

## REPLACEMENT PARTS

Description	Part Number
Housing Gasket	20628
Machined Enclosure Polyester	0100774
Socket Faceplate with Interlock Hole	09467
Socket Faceplate without Interlock Hole	31276
Electronic Dummy, SD-SCE 5 Element	08542
Pressure Switch Assembly	0100543
Interlock Switch, 2 Port Valve	0100181
Bulkhead Connector 4mm	0100179
Polyvinyl Dust Cap and Cable Assembly, Green	08574

Copyright © 2013 Dynacheck, Dynamic Faylsafe, Dynamic Self-Check, Dynamic Self-Checking, Dynamic Self-Test, Dynamic Self-Testing, Faylsafe, IntelliCheck, Intelliview, Sculcon and Scully, are registered trademarks of Scully Signal Company. Specifications are subject to change without notice.

67155 Rev B  
April 2018



**Scully Signal Company**  
70 Industrial Way  
Wilmington, MA 01887, USA  
800 272 8559 • sales@scully.com

**Scully Systems Europe NV**  
Maanstraat 25  
2800 Mechelen, Belgium  
+32 (0) 15 56 00 70 • info@scully.be

**Scully UK Ltd**  
Meridian House, Unit 33  
37 Road One Winsford Industrial Estate,  
Winsford Cheshire CW7 3QG, UK  
+44 (0) 1606 553805 • sales@scullyuk.com

