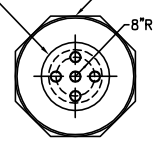




22" FLGD. MANWAY
w/5-4" C.S. NPT
FTGS. & COVER

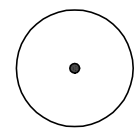
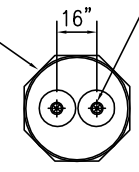
48" DOUBLE WALL CONTAINMENT COLLAR



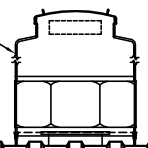
42" DOUBLE WALL CONTAINMENT COLLAR

16"

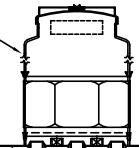
4" FRP NPT FTGS. (2 TYP.)



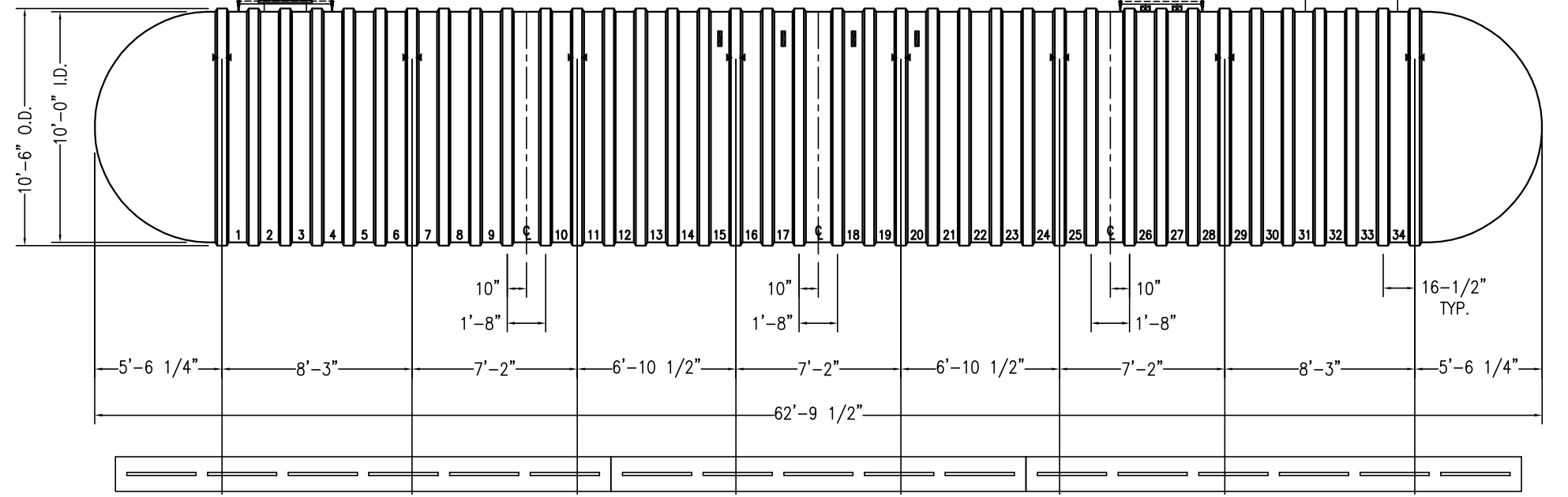
DW PTS (WT34) 48/8-4'
WATERTIGHT TANK SUMP



DW PTS (WT34) (FV2/15/16)
42/8-4' WATERTIGHT FILL SUMP



HYDROSTATIC RESERVOIR



- NOTES:
- ▶◀ HOLD DOWN STRAP LOCATION
 - TYPE "13" LIFT LUG - SD
 - TYPE "13" LIFT LUG - HD

HYDROGUARD (10')-35000		DATE: 10/1/18
MULTI-SUMP SYSTEM		DRAWN BY: K.A.SOEDER
	CAPACITY: 34,835	REVISED:
	WEIGHT: 24350	DWG NUMBER: 1035DWHG-CA