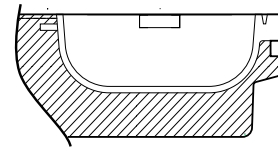
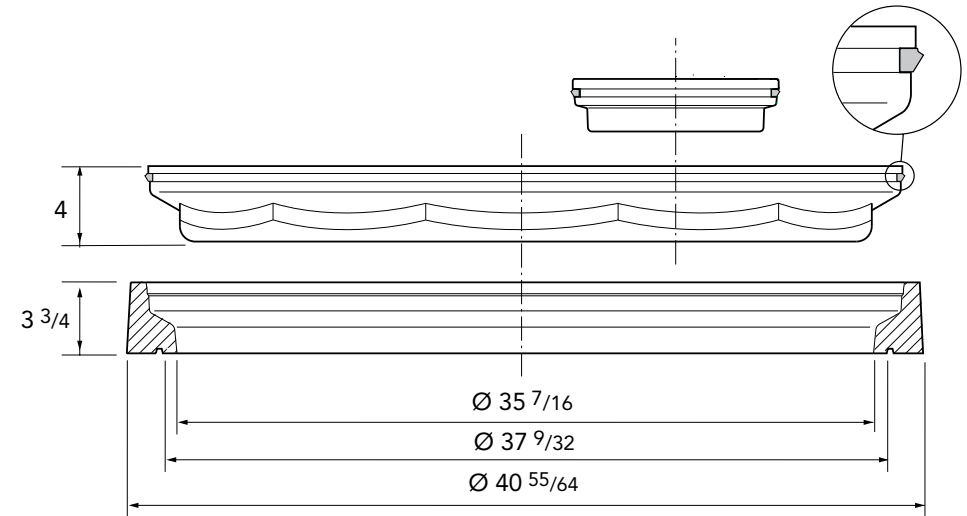
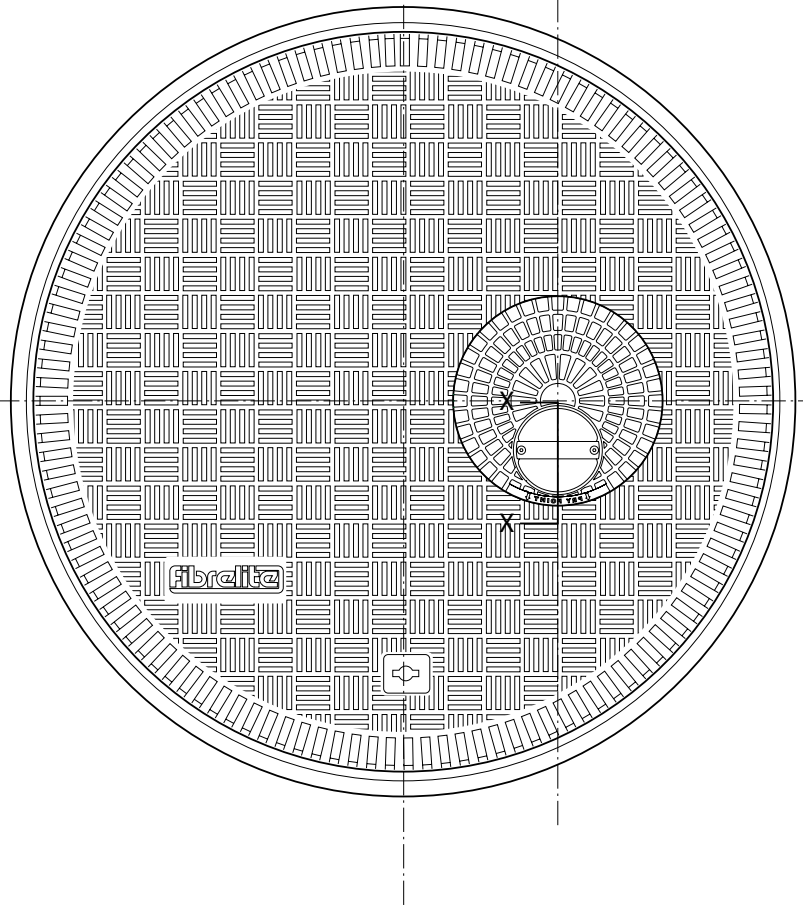
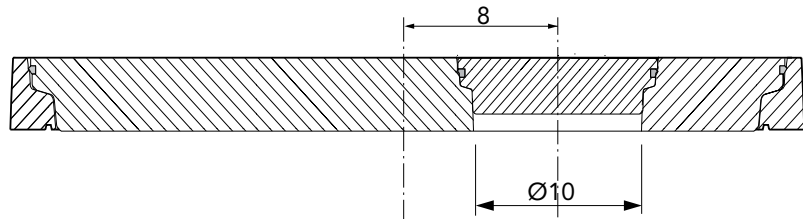


36" dia. watertight flat sealed composite cover and frame, with removable offset port cover (10" dia.)

For reference purposes only. This drawing is not a specification. Order against product code only. To enable continuous improvement of our products, the designs and specifications are subject to change without notice.





SECTION X - X
HANDLE BOWL

Load Rating	Cover Weight	Frame Weight	Port Cover
SD	84 lbs	20 lbs	7 lbs
HD	106 lbs	20 lbs	7 lbs

36" dia. watertight flat sealed composite cover and frame, with removable offset port cover (10" dia.)

For reference purposes only. This drawing is not a specification. Order against product code only. To enable continuous improvement of our products, the designs and specifications are subject to change without notice.

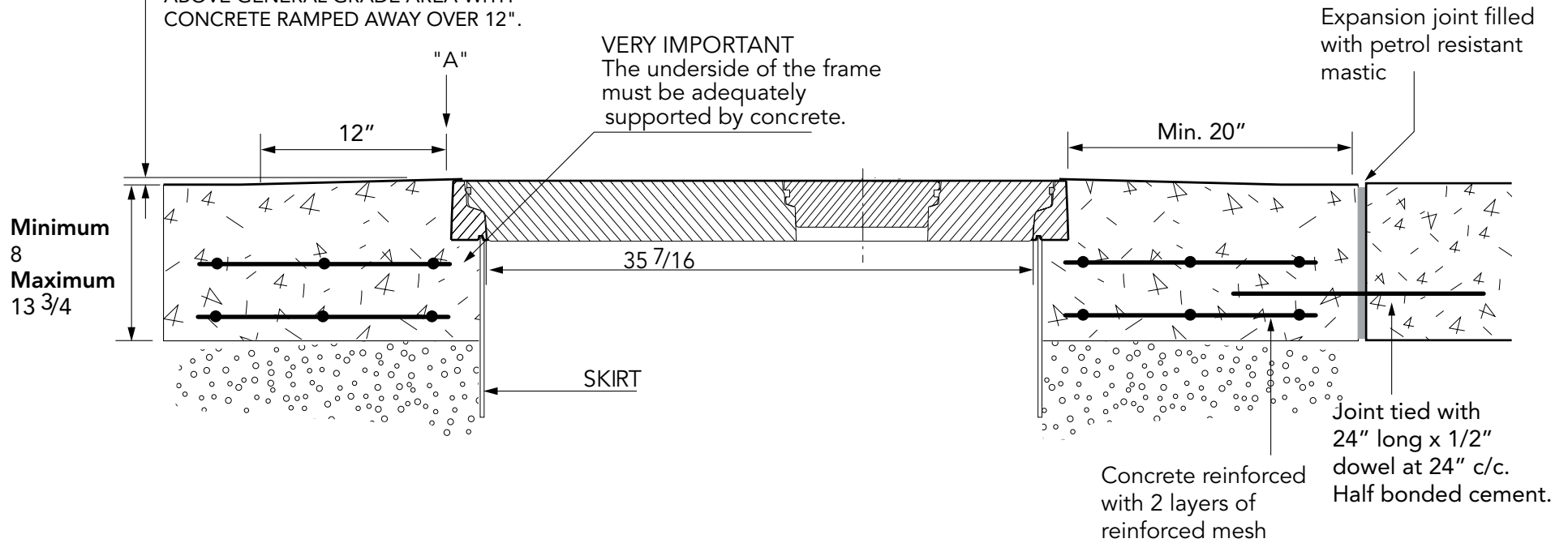


CONCRETE

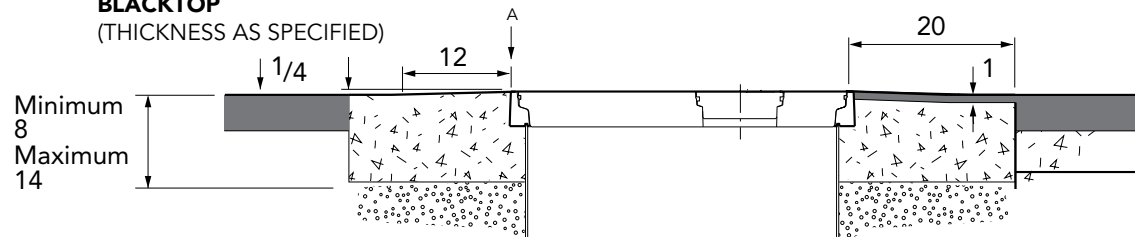
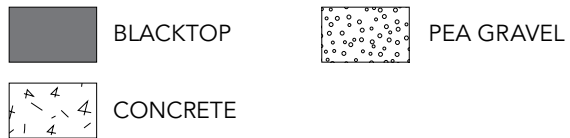
VERY IMPORTANT

OUTER EDGE 'A' OF FRAME SET 1/4" - 1/2" ABOVE GENERAL GRADE AREA WITH CONCRETE RAMPED AWAY OVER 12".

VERY IMPORTANT
The underside of the frame must be adequately supported by concrete.



BLACKTOP (THICKNESS AS SPECIFIED)



36" dia. watertight flat sealed composite cover and frame, with removable offset port cover (10" dia.)

For reference purposes only. This drawing is not a specification. Order against product code only. To enable continuous improvement of our products, the designs and specifications are subject to change without notice.

