

CASE STUDY

## IN-HOUSE EXPERTISE DELIVERS RAPID PUMP SOLUTION

- Rapid turnaround to meet 11 week lead time
- Lifetime spare parts and service support
- Customer deadline and specifications met

### CHALLENGE

Responsiveness and a rapid turnaround were the order of the day at this oil & gas facility. We had just 11 weeks to deliver a complete pump package (including base plate, motor and mechanical seals) to satisfy the customer's operating conditions of 4770 USgpm at 308 feet Total Dynamic Head.



Figure 2 As found surplus pump



**CLYDEUNION®**  
PUMPS

**Industry:** Oil & Gas - upstream  
**Region:** Americas  
**Territory:** Venezuela  
**Category:** Rapid response pump package  
**API Type:** BB1

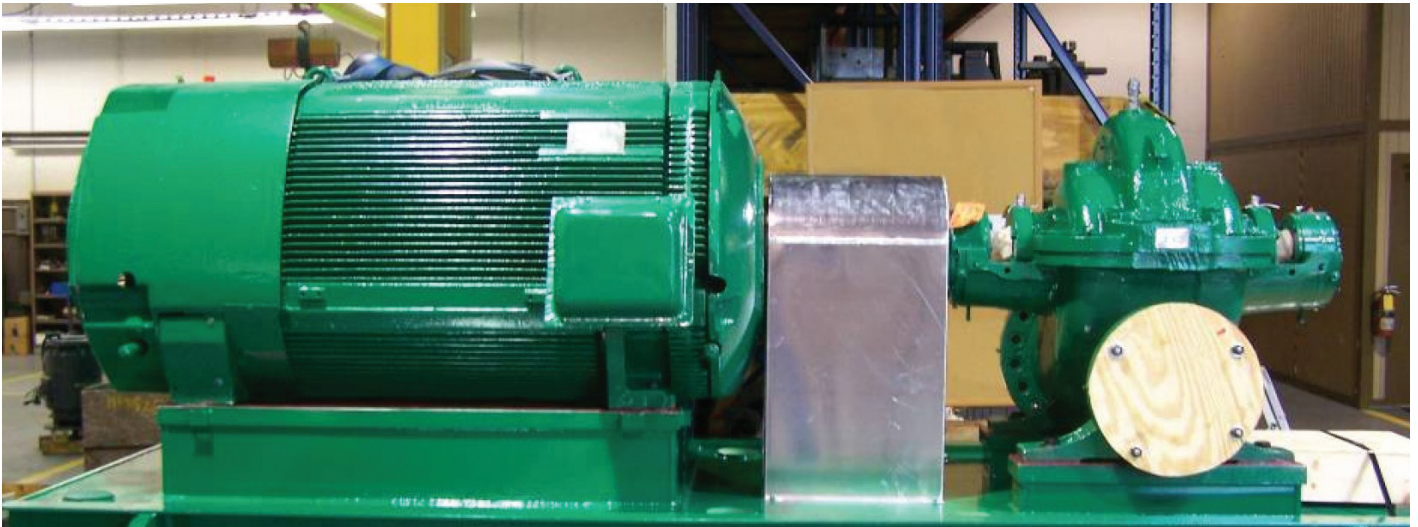


Figure 3 Completed unit

## SOLUTION

Due to the short lead time, a new complete pump offering could not be considered for this application. Instead, Celeros Flow Technology brand ClydeUnion Pumps sourced a FlowServe 10LN pump and a Westinghouse 500HP, 6600 volt motor.

The bare shaft pump was dimensionally inspected and overhauled at our service center (Figure 2), including the provision of new mechanical seals. The pump was then sent for performance testing to verify the hydraulic performance, vibration and noise levels at our test facility in Battle Creek, Michigan.

A list of recommended spare parts was re-engineered and assigned part numbers. A ClydeUnion Pumps serial number was assigned to the pump and a bill of materials was created for the recommended spare parts, enabling us to take ownership of the pump and provide future spare parts.

Our aftermarket engineering team also designed an API 610 construction baseplate for the refurbished pump and motor,

taking into consideration the customer's existing pump dimensions and limitations on available foundation.

The refurbished 500 HP motor was rebuilt with new bearings. All mechanical fits and tolerances were checked and brought back to design specification. Performance testing of the motor was witnessed by aftermarket engineering.

## OUTCOMES

The combination of engineering skills, service capabilities and testing facilities available through Celeros enabled a rapid turnaround that cut lead times by almost 70% compared to a new pump solution. This meant that the complete pump unit (Figure 3) was delivered on time and to customer specification.

Redesignation of the pump to our ClydeUnion Pumps brand means the customer has assurance regarding spare parts and service support throughout the lifecycle of the equipment.

Aberdeen Service Center  
P: (+44) 1224 756 100

Abu Dhabi Service Center  
P: (+971) 02 4081900

Anney Service Center  
P: (+49) 405 220 2401

Baton Rouge Service Center  
P: (+1) 225 778 3310

Battle Creek Service Center  
P: (+1) 269 966 4782

Burlington Service Center  
P: (+1) 905 315 3813

Calgary Service Center  
P: (+1) 800 352 8294

Corpus Christi Center  
P: (+1) 361 371 6519

Downey Service Center  
P: (+1) 562 622 2371

Glasgow Service Center  
P: (+44) 141 637 7141

Jenks Service Center  
P: (+1) 281 217 6359

Odessa Service Center  
P: (+1) 704 808 3780

Penistone Service Center  
P: (+44) 1226 763 311

Singapore Service Center  
P: (+65) 6513 9276

Zhengzhou Service Center  
P: (+86) 371 8665 2391

E: [cu.sales@celerosft.com](mailto:cu.sales@celerosft.com)  
[www.celerosft.com](http://www.celerosft.com)



| SPEED | EXCELLENCE | PARTNERSHIP