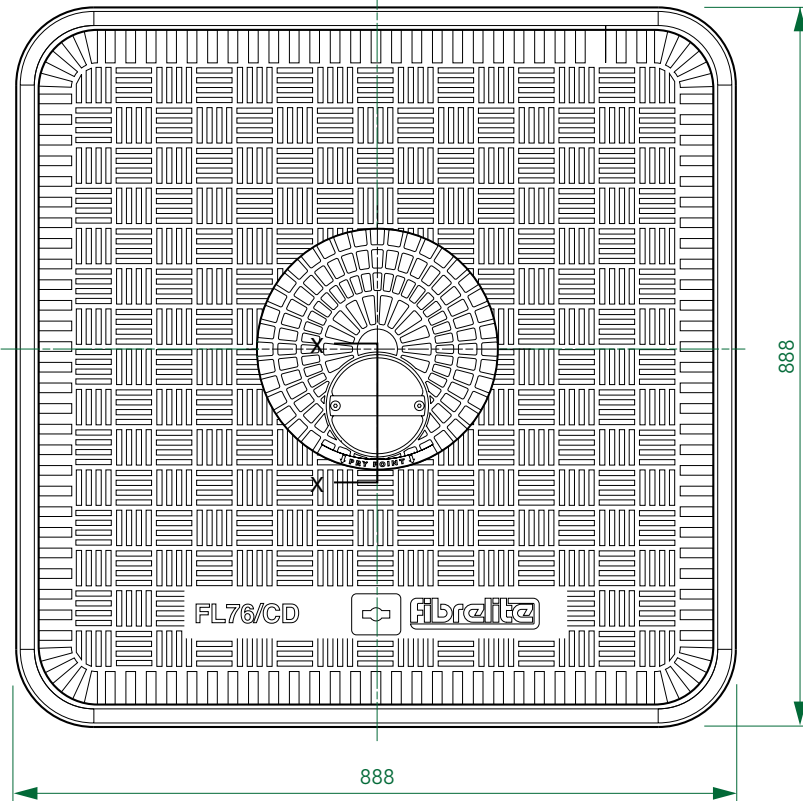
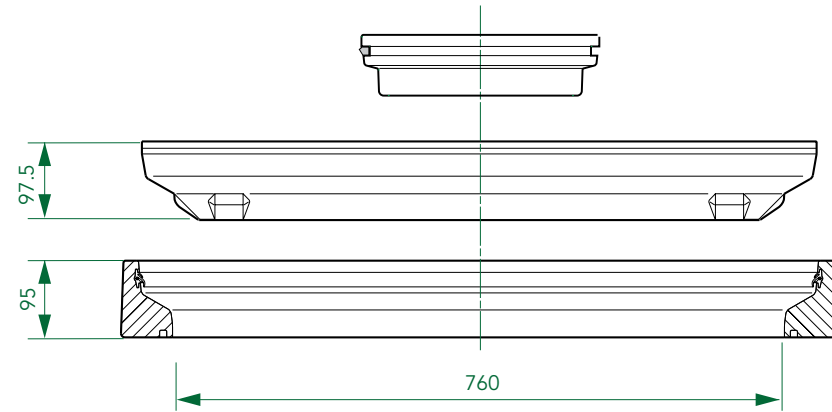
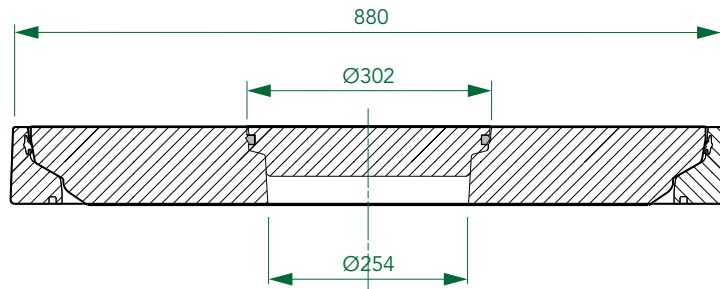


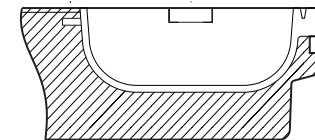
760mm x 760mm flat sealed composite cover with a sealed centre dip cover and aluminium frame.

For reference purposes only. This drawing is not a specification. Order against product code only. To enable continuous improvement of our products, the designs and specifications are subject to change without notice.

FIBRELITE 
PART OF OPW A DOVER COMPANY



| Load Rating | Cover Weight | Frame Weight |
|-------------|--------------|--------------|
| C250 | 29 kg | 12 kg |
| D400 | 39 kg | 12 kg |



SECTION X - X
HANDLE BOWL

760mm x 760mm flat sealed composite cover with a sealed centre dip cover and aluminium frame.

For reference purposes only. This drawing is not a specification. Order against product code only. To enable continuous improvement of our products, the designs and specifications are subject to change without notice.



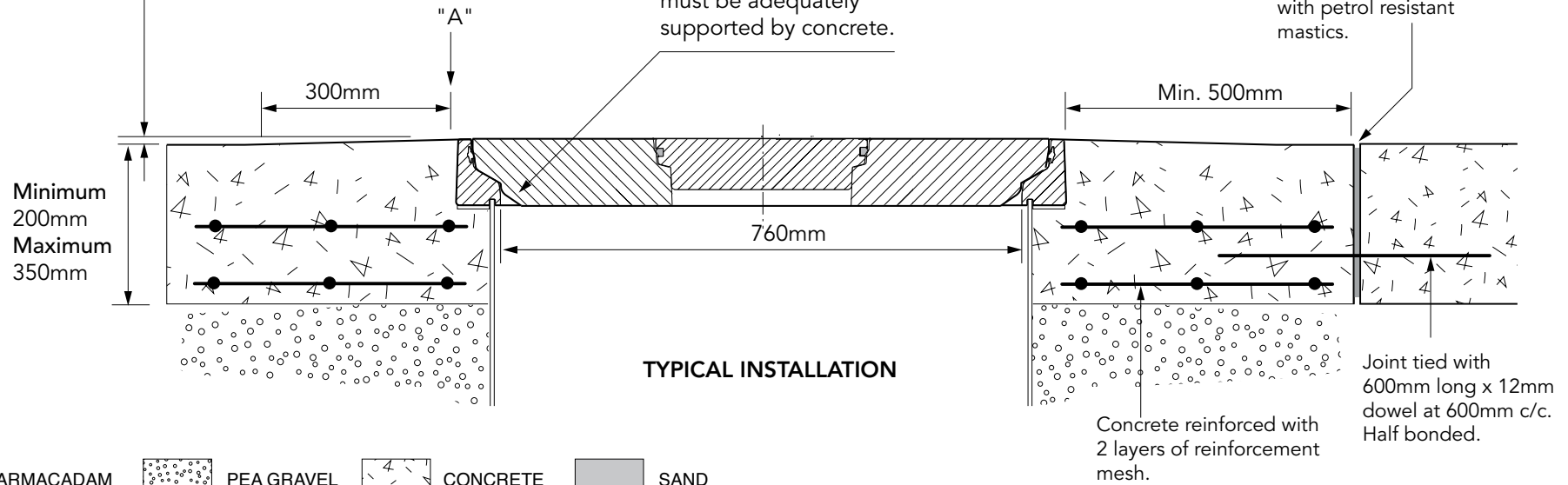
CONCRETE

VERY IMPORTANT

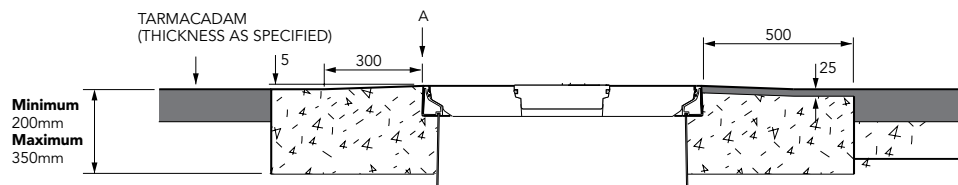
OUTER EDGE 'A' OF FRAME SET 5MM ABOVE GENERAL FORECOURT AREA WITH CONCRETE RAMPED AWAY OVER 300MM

VERY IMPORTANT

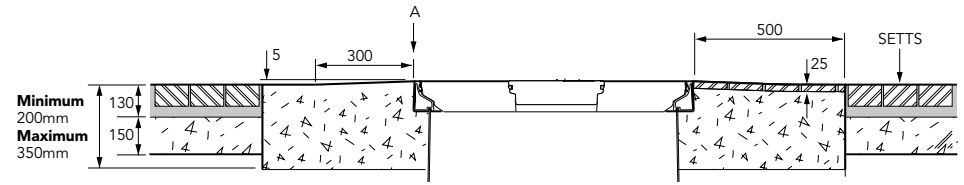
The underside of the frame must be adequately supported by concrete.



TARMACADAM



SETTS



760mm x 760mm flat sealed composite cover with a sealed centre dip cover and aluminium frame.

For reference purposes only. This drawing is not a specification. Order against product code only. To enable continuous improvement of our products, the designs and specifications are subject to change without notice.

