

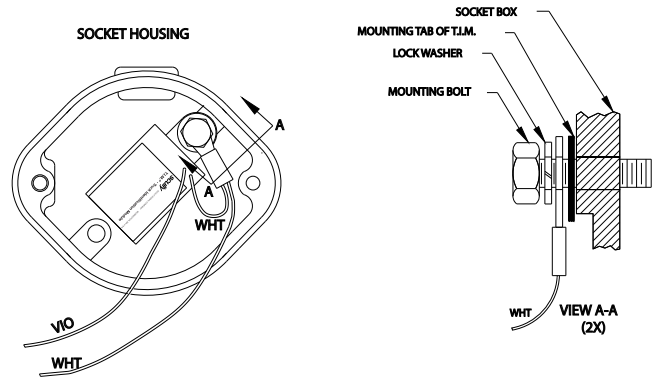
# INSTALLATION INSTRUCTIONS TRUCK IDENTIFICATION MODULE (T.I.M.®)

## MECHANICAL INSTALLATION

On retrofit applications, the socket will need to be removed from the vehicle to mount the T.I.M.®

Mount the T.I.M.® inside the socket housing using one of the holes in the socket base. A screw and nut is supplied for this.

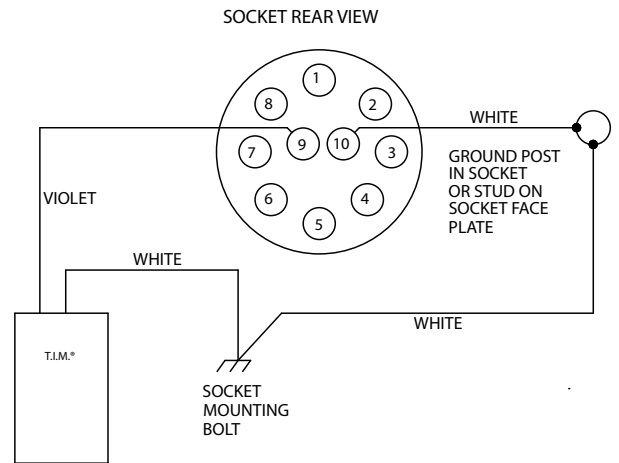
Clean surface area inside the socket around the mounting bolt. Secure the washer (supplied) and ground wire (white) ring lug with the socket mounting bolt, mounting the socket back onto the vehicle.



## ELECTRICAL INSTALLATION

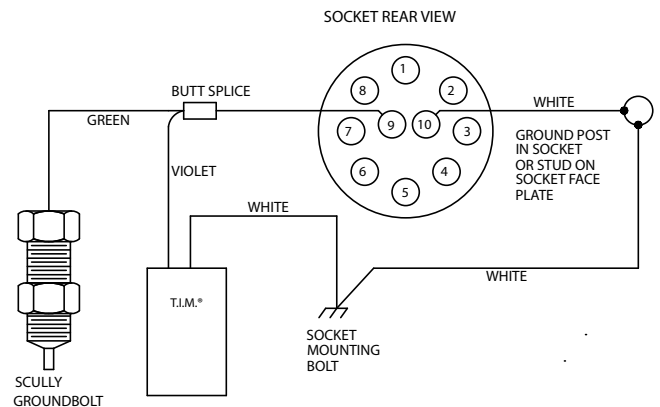
### Tank Vehicles without Scully Ground Bolt

1. Remove any wire that may be connected to pin 9 of the socket. Connect the violet wire of T.I.M.® to pin 9 of the socket as shown.
2. Connect the ground (white) wire of the T.I.M.® from the socket mounting bolt to the ground post in the socket OR Ground stud on the socket face plate. Verify that factory supplied jumper from pin 10 to ground post (stud) is in PLACE



### Tank Vehicles Equipped with Scully Ground Bolt

1. Connect the violet wire of the T.I.M.® to the green wire of the Scully Ground Bolt into one end of a butt splice connector. Connect an 18 gauge tinned copper wire into the other end of the butt splice. Connect the other end of this wire to pin 9. (A butt splice connector is necessary because the connection barrel of pin 9 will not facilitate two wires.)
2. Connect the ground (white) wire of the T.I.M.® from the socket mounting bolt to the ground post in the socket OR Ground stud on the socket face plate. Verify that factory supplied jumper from pin 10 to ground post (stud) is in place.



*Note: Actual socket may have different number of electrical contacts.*

- Record truck identification number printed on the label of the T.I.M.® for entry of this number into the Scully Intellitrol® and Scully Intelliview® database.



**Scully Signal Company**

70 Industrial Way, Wilmington, MA 01887-3479, USA

Tel: 800 272 8559 / 617 692 8600 / fax: 617 692 8620

www.scully.com / sales@scully.com

